

# NEWSLETTER

Volume 1, Issue 3

Autumn 2005

We are very grateful to the small band of volunteers who deliver the newsletter. But, we still need some help, particularly in Rother View/Coronation Cottages/Andrews Close areas. These areas are currently delivered by a volunteer who doesn't live there and if we don't get an offer from someone from the area we may not be able to continue delivery there. Can you help?

If so, please contact the parish office.

Autumn is now upon us and with the recent rain residents minds will naturally turn to the events of 2000 and the flooding of the village. Since then, of course, there have been extensive flood defences installed and whilst thankfully these have not been tested practically we know that the Environment Agency is well prepared in its planning. Much clearance work has been done on the rivers and drainage ditches and this should help any water get away faster.

They have also recently carried out practice runs to see that all equipment etc. is in place.

Early in the new year we hope to arrange a 'drop-in' morning when residents can discuss the defences and plans with members of the EA.

Whilst we hope that no one will suffer from flooding, please remember that the parish Council still holds some funds to help in an emergency.

## Dates for your diary 2006

Council Meeting Robertsbridge Hall	9th January
Planning Meeting Youth Centre	2nd February
Council Meeting Robertsbridge Hall	13th March
Planning Meeting Youth Centre	6th April
Parish Assembly Robertsbridge Hall	10th April

All meetings start at 7.30 pm and a period of up to 15 minutes is allowed at the start of the meeting for public comment or questions.

Agendas for meetings are posted on the parish notice boards and web site at least 3 days before the meeting—planning applications are available for inspection at the parish office during normal opening times or on the Rother District Council web site.

**What's happening at the Mill?** - Rother DC Planning Project Manager is putting together a scheme to try to raise grant money to purchase a large proportion of the site to create a Culture and Enterprise centre.

If successful, this would mean that not only would jobs be created but there would be space for arts creation projects and performances; small business units and workshops enabling new business start ups and educational facilities enabling young people to get practical work experience.

Time is short for putting in the grant application and we, and Rother, want to know your thoughts on this project. There will be consultation with interested parties over the months ahead but we are holding an initial consultation for village residents on **Friday 9th December** during the **Late Night Shopping evening**. The venue will be announced later but why not drop in and see what is proposed and give us your views and enjoy some refreshments.

### B.A.C.T. Bus Service Continues

After several uncertain weeks when the funding was cut and the future of the service was in doubt, the Community Bus service between Battle and

Burwash will now continue for the foreseeable future with an amended timetable.

The new timetable serving Robertsbridge is:

**Tuesday**

**10.45 Hackwoods**

**10.50 Railway station**

**10.55 George Hotel**

**via Mountfield arriving Battle 11.15**

Return from Battle **13.10** from Abbey Green, via Mountfield, arriving Robertsbridge 13.30 pm.

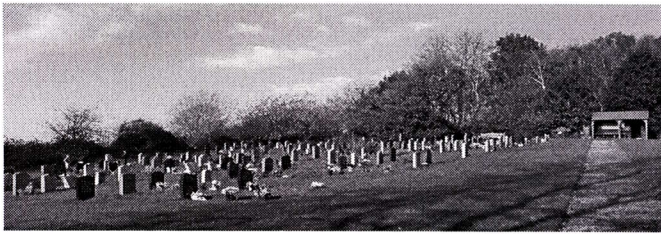
**Fridays—the same as Tuesdays except returning from Battle at 13.00**

The bus also runs out to Burwash via Hurst Green on Fridays. The fare is £2.50p return or £1.25p with a County Card (that's cheaper than the parking! Ed.). County Cards are available free of charge if you are a Rother resident or over 60 and can be obtained from Rother Help & Advice Centre, Market Square, Battle. You will need to take proof of identity and a passport sized photo.

The future of the Community Bus service relies on it being used and also for volunteer drivers. The service can use your help even if you can give only half a day a week! Please 'phone the BACT office **01424 772001** for details of this and services and also if you need to be picked up other than at the detailed stops.



**What is the Parish Council doing about.....?** In each issue of the newsletter we will try to focus on one aspect of the parish council responsibilities.



**Salehurst Cemetery** - not to be confused with the churchyard!! The parish cemetery is situated in Beech House Lane, approximately 600 yards NW of Salehurst Church. It covers just under an acre, with approximately 600 grave spaces.

The land, formerly known as 'Stone Rock Croft' was originally freely given to the Vicar of Salehurst in 1933, in exercise of powers contained in the Consecration of Churchyards Act 1867. However, it was subject to a restriction on the use of foreign marble for curbs and headstones, and it was eventually decided that the Bishop would be unable to consecrate the land with this restriction in place. When the donor refused to lift it, the land was conveyed back to him and the conveyance endorsed as cancelled on 28<sup>th</sup> May 1949.

This left the Church with a serious problem. The churchyard was almost full, with only sufficient grave spaces for a few more years. Having already extended the churchyard in 1927 and again in 1931 they were unable to identify any other suitable piece of land in the vicinity to extend it further. When the churchyard was full, the responsibility for providing grave spaces would fall to the then 'Battle District Council.. The Church was reluctant for that to happen, believing it preferable for the provision to remain within local control, so they approached the Parish Council to ask them to adopt the Burial Acts of 1852 to 1906.

Salehurst Parish Council was constituted as the Burial Authority, under the Local Government Act 1894 Section 7(1)(c), by resolution of a Parish Meeting held on 5<sup>th</sup> May 1950. It then fell to them to find a suitable piece of land within the parish for a burial ground. After much research and several possible sites being dismissed (there are strict rules relating to proximity of housing, distance from roads, direction of land drainage, liability to flooding etc) the only piece of land identified as suitable was... '*Stone Rock Croft*' in *Beech House Lane!* The owner, presumably still

unhappy about the prospect of foreign marble, refused to sell it, and the land was eventually acquired under 'The East Sussex (Salehurst Burial Ground) Compulsory Purchase Order 1951' and conveyed to Salehurst Parish Council on 7<sup>th</sup> October 1953 for £75.

Several years of preparations followed, including formation of plans, setting of fees and rules and regulations, home office approvals, planning applications and of course, ground preparation and boundary fences and gates etc. It was agreed that the Burial Ground should be of the 'Lawn Cemetery Type', meaning no grave mounds, no grave curbs or edgings and headstones limited in size and type.

Part of the Cemetery (Division B) was consecrated by the Bishop of Lewes on Wednesday 10<sup>th</sup> September 1958, and the first interment took place on 28<sup>th</sup> July 1960, in grave number 1, Division B; Neville Sherwood died in a road accident in Station Road, age 18 years. There have now been 405 interments (burials and cremated remains), with approximately 300 grave spaces remaining. If interments continue at the same average rate as the last 45 years, and barring outbreaks of plague (or Bird Flu!!) this precious resource should last for another 45 years or so! A further section (in Division A) was consecrated by the Bishop on Saturday 14<sup>th</sup> December 2002.

All parishioners of Salehurst and Robertsbridge have a right of burial in the Cemetery, on payment of the appropriate fee. Non parishioners may, at the discretion of the Cemetery Committee, be buried subject to the payment of double the standard fee. This is in order to preserve the limited space for our own residents, but allow for discretion for those with very close ties to the village, one example being residents who have spent their last few years in a nursing home.

If you have never visited the cemetery, why not take a walk up there? It is a very tranquil and lovely spot, particularly on a sunny day and has very spectacular views across the village.

We hope to arrange a 'tidy up' day early in the New Year, so if you are interested in taking part please contact the Clerk.

Full copies of the rules and regulations and fees are on display at the cemetery, on our website, or available from the Clerk at the Parish Office.

**England expects...** the parish joined many others around the country in commemorating the 200th anniversary of the Battle of Trafalgar and the death of Admiral Nelson. On Friday 21st October, the anniversary date, the church bells were rung at midday and in the evening there was an illustrated talk 'The Nelson

Touch' given by David Clark, followed by refreshments (prepared by the W.I. Members) which raised £186 for the seaman's charity, Seafarers UK. Thanks to all who helped to make this event so successful On Sunday 23rd, a special service of commemoration was held at St. Mary's church, Salehurst.



**Age Concern** - Age Concern Monday Club meets every Monday (except Bank Holidays) in the Village Hall from 10:30-2:30 (cost £4.00). A well stocked-stall sells various items including books, bric-a-brac, cards, plants and wool. The baked goods stall has been a very popular recent addition. Biscuits, cakes, chutney, jam, marmalade, and pies are for sale one Monday a month – exact date is posted in the hall.

Coffee and biscuits are served on arrival and lunch is offered from a service run by "apetito". One Monday a month is set aside to provide "home cooking", courtesy of two volunteers who have been doing this from their own homes for at least 10 years. Robertsbridge WI provides a local "shopping service" each week to pick up items of need from the shops in the village. A 20p raffle is held giving members the chance to win a small useful item. Birthdays are remembered at the appropriate time with a card, flowers and a hearty rendition of Happy Birthday sung by all. This past July we not only celebrated the club's birthday (18 this year!) but also the 80<sup>th</sup> birthday of one of the founding members, Miss Margaret Bryson.

After lunch, a hot cup of tea is served during which members break off into little groups to play cards, Dominoes, Scrabble, or perhaps just sit and chat or look at the selection of magazines.

**EXTEND (Exercise Training for the Elderly and Disabled) EXERCISES** have been provided since the club's inception 18 years ago. Extend does not provide treatment but trains its teachers to promote the

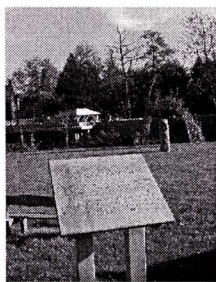
quality of life through recreational movement training with rhythmic musical accompaniment. Extend is useful not only for those wishing to maintain mobility but also as a part of a rehabilitation process after illness and is readily adapted to meet all needs. A new instructor will take over this favoured activity on 9th January.

Additional services: the club has a wheelchair available for short-term loan – donations gratefully accepted. A chiropodist visits at regular intervals for which she charges a fee.

To date, the club has taken coach trips to Middle Farm and Shoreham Airport. At the time of this writing, other trips are planned for a pub lunch at Lympne (September) and a ride to Paradise Park Garden Centre at Newhaven (October). The annual shopping trip to Eastbourne with lunch at the Wish Tower will be on 21<sup>st</sup> November and a few weeks later, on the 12<sup>th</sup> December, the much-looked forward to Christmas party will be held in the Village Hall, when members will be entertained by the students of Salehurst Primary School singing Christmas Carols. The last meeting this year is 19<sup>th</sup> December. Meetings resume on 9<sup>th</sup> January 2006.

The Monday Club's success can be attributed to the wonderful members who attend each week, many of whom have been "regulars" for years. Prospective members are invited to stop by the Village Hall on Mondays for a coffee and a chat and are also welcome to stay for dinner. For further information, contact Pat (880095) or Margaret (880121).

**Jubilee Garden** Saturday 25th June saw the official opening of the garden which had been largely funded and designed by Southern Water & SE Water as an environmental mitigation project in connection with the Bewl Transfer pipeline. Margaret Devlin, M.D., of SE Water performed the short ceremony. The wooden carving by artist Sue Nunn was commissioned by Robertsbridge Arts Partnership and was donated to the parish to mark the completion of the flood defences.



It is good to see that this pleasant spot has become a popular place for people to sit and enjoy the peaceful surroundings.

Across the road in Piper's Field, which also belongs to the parish, you may have noticed that several trees were cut down in the summer. These were willows planted by Gray Nicolls before the

parish owned the land and had reached maturity. Over the next few years more will disappear, so the parish is starting a replacement programme but with more variety. This winter we are planting some Black Poplars which also like wet places; are fairly fast growing and have good autumn colours and summer scents. As the remaining willows are removed we will plant other species.

**HEMOCALL** - This year Homecall celebrates 20 years of providing a free service to people with varying degrees of sight loss. All volunteers are trained and matched one to one with clients and provide help by reading letters, going for a walk together, helping with phone calls - but not cooking, personal care or domestic work. If you know someone who is visually impaired who would like to use the services or if you have the time to visit a client for even one hour per week then please contact Barbara Balkham, the Rural Rother Coordinator tel: 01424 75503, or



## SALEHURST & ROBERTSBRIDGE PARISH COUNCIL

Clerk to the Council:  
Mrs Karen Ripley

The Parish Office  
Robertsbridge Youth Centre  
The Grove, George Hill  
Robertsbridge, East Sussex TN32 5AP

Phone: 01580 882066  
Fax: 01580 882066  
Email: clerk@salehurst-pc.org.uk

Web address:  
[www.salehurst-pc.org.uk](http://www.salehurst-pc.org.uk) or  
[www.robertsbridge-pc.org.uk](http://www.robertsbridge-pc.org.uk)

The Parish Office is open to the public at the following times:

Tuesday	9am to 11am
Thursday	2pm to 4pm

Rother District Council  
Web address:  
[www.rother.gov.uk](http://www.rother.gov.uk)

**Increased Police Presence for village** - a new initiative by Sussex Police should see an increase in the number of police and Community Support Officers seen in the village. It was hoped to set up a police base in the One Stop shop thanks to the owners of the building (Owen & Doreen who ran the shop before One Stop). This would mean that officers will not always have to return to Battle. The Parish Council is working closely with Inspector Franklin on this project which will hopefully be up and running in the near future.

The One Stop location has run into some, problems, hopefully not insuperable, but if any one knows of other possible sites please get in touch.

Similar facilities are being proposed for other villages such as Burwash if suitable premises can be found and this should mean that the police coverage for the rural areas will be much improved. Another improvement is the installation of CCTV cameras outside One Stop and the Seven Stars.

**Walks in Salehurst & Robertsbridge** - It is more than 10 years since this book was first published and a new, fully revised edition has now been published. 8 walks, 3 to 5 miles in length, covering much of the parish are described.

The book is now on sale, price £1.50p, from the Post Office or the Parish Office.

**Worker's Educational Association** - the WEA has been in existence for over 100 years and is the largest independent provider of adult education in the country; it is recognised and supported by central and local government. A branch has been running in Robertsbridge on and off for over 20 years.

The WEA is unusual in that the courses are determined by local members who decide what course they want and the Area Course Coordinator then tries to find a tutor to run it for us! Robertsbridge has a fairly eclectic group and over the years we have had courses on history, literature, art, architecture and cosmology! During this current term we have a course on 'All aspects of Opera' and in the New Year there will be a course on Renaissance art.

The group is small, friendly and informal and you don't need any special qualifications or knowledge to join a class; if you want to see if a course is right for you, you are welcome to come to the first meeting without obligation. Courses normally cost £39 for 10 two hour meetings but there are some concessions. For more information please contact the group Secretary, Margaret Allen on 01580 881056

**Robertsbridge Hall** - At the Community Association AGM in June, the Chairman, Gail Amies and the Treasurer David Allen both retired from the commit-

tee and were thanked for their dedicated service over many years.

A new committee was formed with the post of Treasurer being filled by Nigel Lockwood and that of Secretary by Philip Underhill. New members came forward for the committee and at their first meeting David Chandler was elected as Chairman.

In July, Jill Woodgate retired from her position as Bookings Officer and this post was filled by Serena Colvin. For bookings, Serena can be contacted on 01580 882075: e-mail: info@robertsbridgehall.co.uk.

More information about the hall and booking fees can be found at the web site [www.robertsbridgehall.co.uk](http://www.robertsbridgehall.co.uk)

It is good to see that the hall will continue to provide a good venue for village events under its new committee.

**Any news?** - we are always happy to report news from local groups - please send any items to the Parish Clerk either as hard copy or electronically.

**STOP PRESS!! Christmas & New Year** - The parish office will be open from 9 - 11am (NOT the afternoon as usual) on Thursday 22nd December and will then be closed until Tuesday 3rd January 9 - 11am. Urgent enquiries can be left on the parish answer phone service.